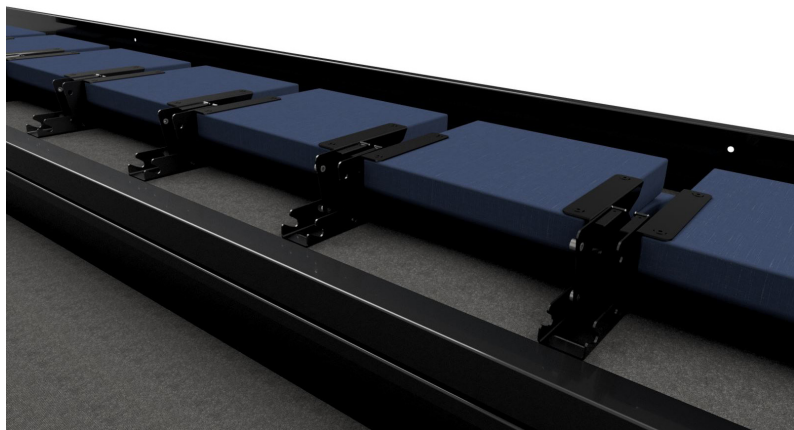
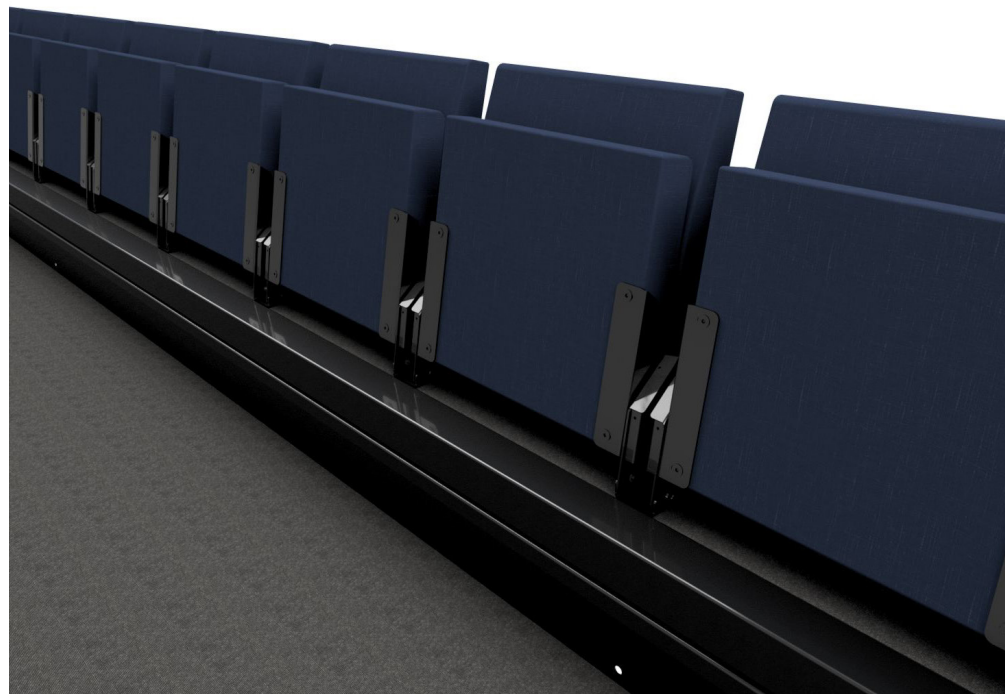


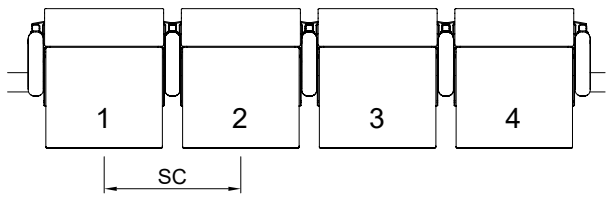
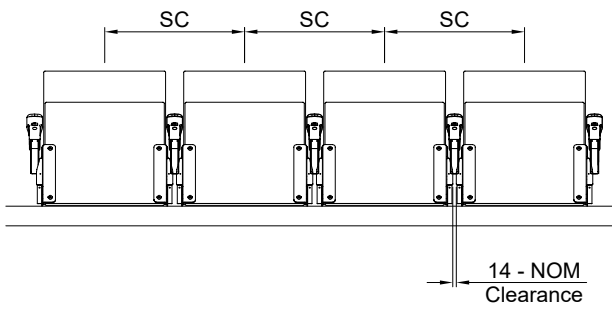
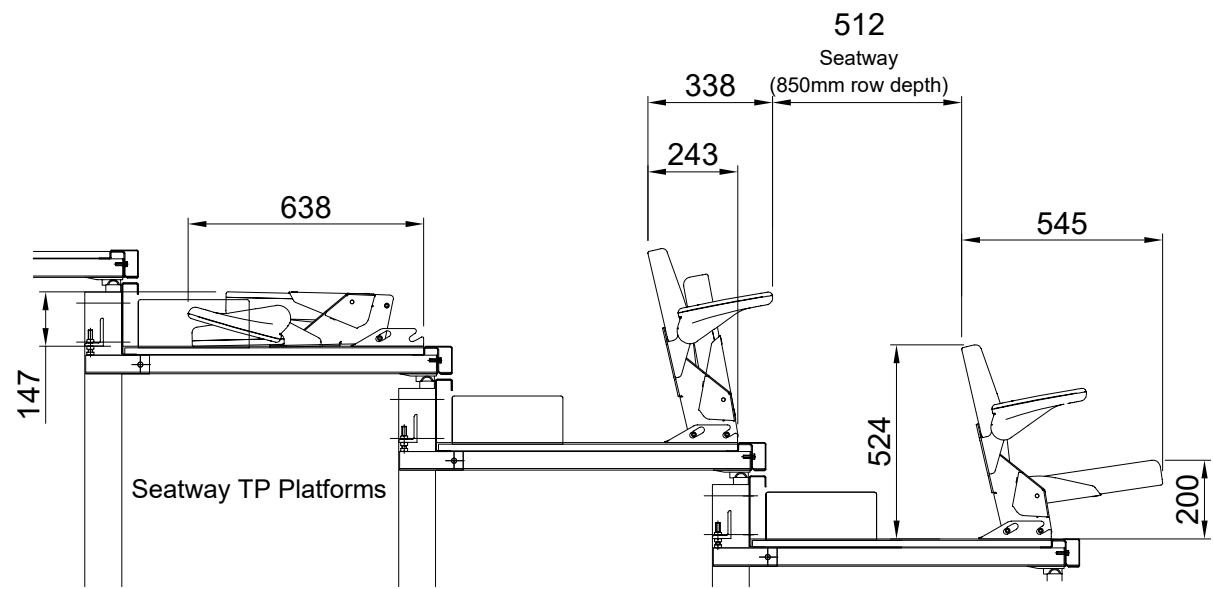
A space-saving, nose-mounted chair ideal for venues looking to maximise capacity, the S200 is notably reliable and offers exceptional value. It has to be designed to be versatile and durable, perfect for school environments.



FEATURES

- Available on retractable row rises from 244mm to 270mm
- Seat widths from 450mm to 490mm with arms
- Preformed plywood seat and back structure with contoured upholstery
- Spring-activated tipping with a fully enclosed stop mechanism
- Available with wood or plastic arms

S200 NM
Available for Retractable, Fixed & Flat Floor applications



	Arms	No Arms
	Seatway	Seatway
Seat Centre (SC)	(490mm - 540mm)	(460mm - 540mm)
Row Rise	260mm	260mm

Strength & Stability

The chair satisfies the requirements of
EN 12727:2000.

Fire Retardency

The fabric and foam comply with BS 5852:1990 (Source 0, 1,
and 5). Other codes or European Standards can be satisfied
as required.

S200 NM

Available for Retractable, Fixed & Flat Floor applications